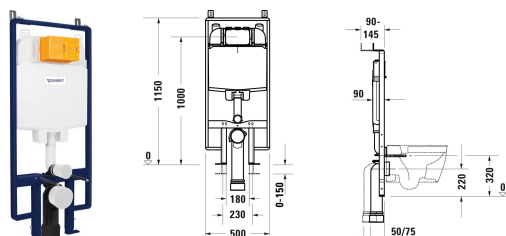


# DuraSystem® Installation element dry installation for WC Basic # WD1031000000

| < 500 mm > |



Installation element dry installation for WC Basic	Dimension	Weight	Order number
6 l, Powder-coated, Type of installation: In standard lightweight construction, In front of solid wall, Type of mounting: Drywall, Height adjustable: 150 mm, Flush operation: Mechanical, Flush operation position: Top, Adjustable flush volumes, Flush type: Dual Flush, insulated against condensation, Self-supporting, Suitable for panelling with plasterboards			
<b>Colors</b>			
00 White Alpin			
<b>Variant</b>			
		11.251 kg	WD1031000000
<b>Suitable products</b>			
Mechanical actuator plate for WC Beta 100 Plastic, Dual Flush, Flush operation: Mechanical, Flush operation technology: Manual, Type of installation: surface mounted, Incl. installation frame, Including mounting kit, Incl. push rod	230 x 6.5 mm	0.267 kg	WD5009
Mechanical actuator plate for WC Beta 120 Plastic, Dual Flush, Flush operation: Mechanical, Flush operation technology: Manual, Type of installation: surface mounted, Incl. installation frame, Including mounting kit, Incl. push rod	230 x 6.5 mm	0.281 kg	WD5010

All drawings contain the necessary measurements which are subject to standard tolerances. They are stated in mm and are non-binding. Exact measurements, in particular for customised installation scenarios, can only be taken from the finished piece.