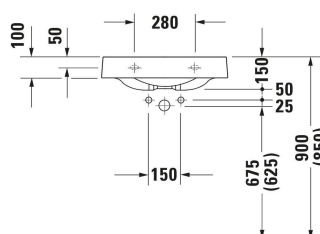
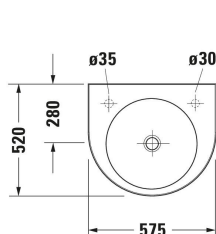


Architec Washbasin # 0449580000 / 0449580008 / 0449580009 / 0449580023

| < 575 mm > |



Washbasin	Dimension	Weight	Order number
Semi-circular, Tap hole platform: Yes, Overflow: No, Underside glazed, Back side glazed: No, 575 mm			
Colors			
00 White Alpin			
Variant			
● ● White High Gloss, Number of washing areas: 1 Middle, Soap dispenser position: Right, Number of pre-marked tap holes: 1		15.200 kg	0449580000
● White High Gloss, Number of washing areas: 1 Middle, Number of faucet holes per wash area: 1 Right		15.200 kg	0449580008
● White High Gloss, Number of washing areas: 1 Middle, Number of faucet holes per wash area: 1 Left		15.200 kg	0449580009
● ● White High Gloss, Number of washing areas: 1 Middle, Number of faucet holes per wash area: 1 Left, Soap dispenser position: Right		15.200 kg	0449580023
Accessory			
Slotted waste washbasin without overflow, Diameter: 72 mm	Ø 72 mm	0.45 kg	005024
Recommended faucets			
single lever basin mixer M Chrome, Ceramic cartridge, Height: 170 mm, Spout reach: 139 mm, Connection type for water supply connection: Flexible connecting hoses, Dimension of connection hose: 3/8", Spray mode: Normal spray, Aerator adjustable, Temperature limit adjustable, recommended operating pressure: 1 - 5 bar, Noise class: I, 175 x 50 mm	175 x 50 mm		B11020002
single lever basin mixer M Ceramic cartridge, Height: 175 mm, Spout reach: 113 mm, Connection type for water supply connection: Flexible connecting hoses, Dimension of connection hose: 3/8", Spray mode: Normal spray, Aerator adjustable, recommended operating pressure: 1 - 5 bar, Noise class: I, 143 x 40 mm	143 x 40 mm		C11020002
single lever basin mixer L Ceramic cartridge, Height: 262 mm, Spout reach: 136 mm, Connection type for water supply connection: Flexible connecting hoses, Dimension of connection hose: 3/8", Spray mode: Normal spray, Aerator adjustable, recommended operating pressure: 1 - 5 bar, Noise class: I, 166 x 40 mm	166 x 40 mm		C11030002

**Architec Washbasin # 0449580000 / 0449580008 /
0449580009 / 0449580023**

| < 575 mm > |

single lever basin mixer M Chrome, Ceramic cartridge, Height: 165 mm, Spout reach: 138,5 mm, Connection type for water supply connection: Flexible connecting hoses, Dimension of connection hose: 3/8", Spray mode: Normal spray, Aerator adjustable, Temperature limit adjustable, recommended operating pressure: 1 - 5 bar, Noise class: I, 175 x 42 mm	175 x 42 mm	B21020002
single lever basin mixer M Chrome, Ceramic cartridge, Height: 167 mm, Spout reach: 107 mm, Connection type for water supply connection: Flexible connecting hoses, Dimension of connection hose: 3/8", Spray mode: Normal spray, Aerator, Temperature limit adjustable, recommended operating pressure: 1 - 5 bar, Unified Water Label (UWL) Class: 1, 149 x 43 mm	149 x 43 mm	A11020002
2 Hole basin mixer electronic M Height: 157 mm, Spout reach: 148 mm, Temperature control: Ceramic cartridge, Aerator adjustable, Connection type for water supply connection: Flexible connecting hoses, Dimension of connection hose: 3/8", Temperature limit adjustable, Flow rate (3 bar): 5 l/min, Adjustable water run time, Hygienic flush, Spray mode: Normal spray, Incl. spout, Incl. control unit, Incl. operating unit, Operation type: Controller, without pop-up waste set, Electronic control: power supply, Protection type: IPX4, 198 x 45 mm	198 x 45 mm	D11100008
2 Hole basin mixer electronic M Height: 157 mm, Spout reach: 148 mm, Temperature control: Ceramic cartridge, Aerator adjustable, Connection type for water supply connection: Flexible connecting hoses, Dimension of connection hose: 3/8", Temperature limit adjustable, Flow rate (3 bar): 5 l/min, Adjustable water run time, Hygienic flush, Spray mode: Normal spray, Incl. spout, Incl. control unit, Incl. operating unit, Operation type: Controller, without pop-up waste set, Electronic control: power supply, Protection type: IPX4, 198 x 45 mm	198 x 45 mm	D11100007
2 Hole basin mixer M Height: 157 mm, Spout reach: 148 mm, Temperature control: Ceramic cartridge, Aerator adjustable, Connection type for water supply connection: Flexible connecting hoses, Dimension of connection hose: 3/8", Flow rate (3 bar): 5 l/min, Spray mode: Normal spray, Operation type: Mechanical, without pop-up waste set, 198 x 45 mm	198 x 45 mm	D11120002
2 Hole basin mixer M Height: 157 mm, Spout reach: 148 mm, Temperature control: Ceramic cartridge, Aerator adjustable, Connection type for water supply connection: Flexible connecting hoses, Dimension of connection hose: 3/8", Flow rate (3 bar): 5 l/min, Spray mode: Normal spray, Operation type: Mechanical, without pop-up waste set, 198 x 45 mm	198 x 45 mm	D11120009

All drawings contain the necessary measurements which are subject to standard tolerances. They are stated in mm and are non-binding. Exact measurements, in particular for customised installation scenarios, can only be taken from the finished piece.