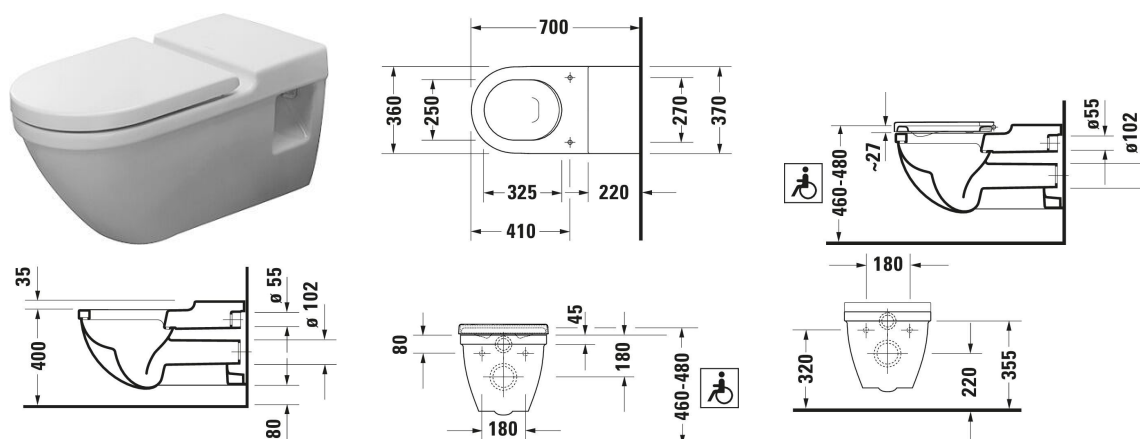


## Starck 3 Wall-mounted toilet Vital # 220309..00 / 220309..00

| < 370 mm > |



Wall-mounted toilet Vital	Dimension	Weight	Order number
Flush water quantity: 6/3 l, Washdown model, Flushing rim: Closed, Flush principle: washdown model, Outlet drain horizontal, Barrier-free version, Unified Water Label (UWL) Class: 2			
Colors			
00 White Alpin 20 HygieneGlaze (an antibacterial ceramic glaze that provides almost indefinite effectiveness)			
Variant			
White High Gloss, Flush water quantity: 6 l		33.000 kg	220309..00
White High Gloss, HygieneGlaze, Flush water quantity: 6 l		33.000 kg	220309..00
Sanitary ceramics with the special WonderGliss surface finish will remain clean and attractive-looking for a long time to come. When ordering WonderGliss please add a "1" as eleventh digit to the model number.			
Accessory for ceramics			
Mounting Suitable for Wall-mounted bidet, Wall-mounted toilet	Ø 12 mm	0.28 kg	006500
Accessory			
Noise reduction set		0.2 kg	005090
Suitable products			
Toilet seat Vital Automatic close: No, Hinge material: Stainless steel, 416 x 371 mm	416 x 371 mm		006241
Toilet seat ring Vital Angled bumper, Continuous hinge rod, 404 x 350 mm	404 x 350 mm		006261

All drawings contain the necessary measurements which are subject to standard tolerances. They are stated in mm and are non-binding.

**Starck 3 Wall-mounted toilet Vital # 220309..00 / 220309..00**

**|< 370 mm >|**

*Exact measurements, in particular for customised installation scenarios, can only be taken from the finished piece.*